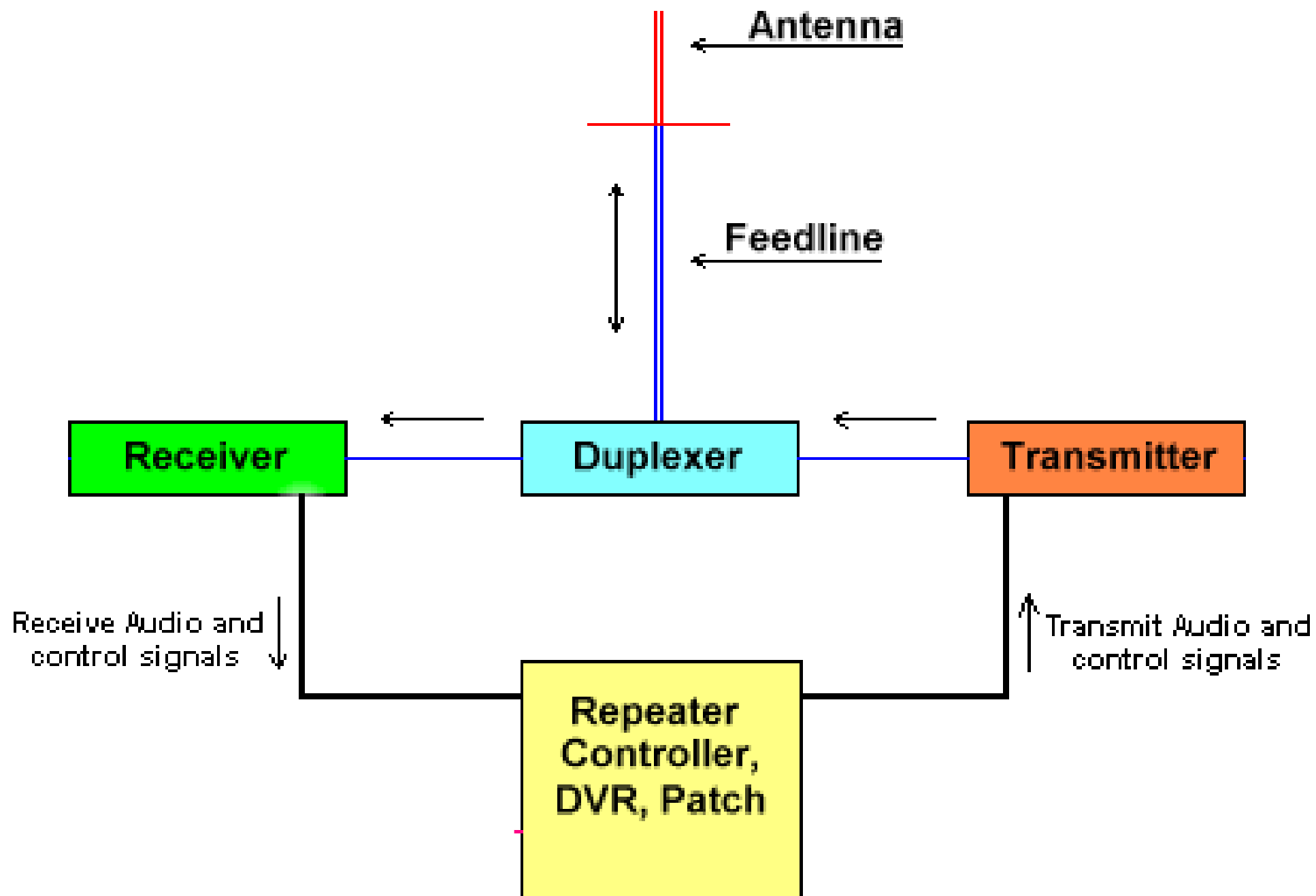
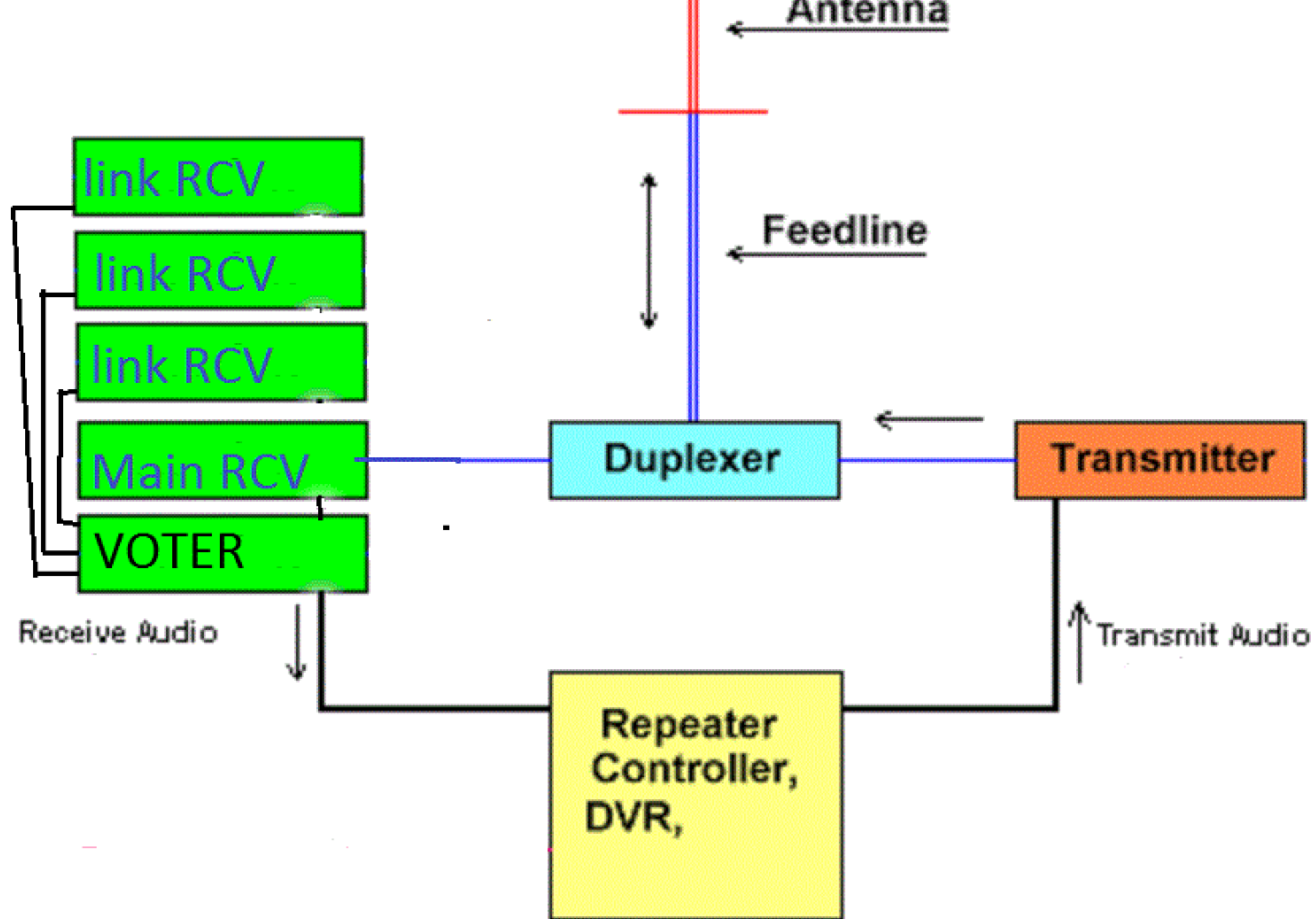
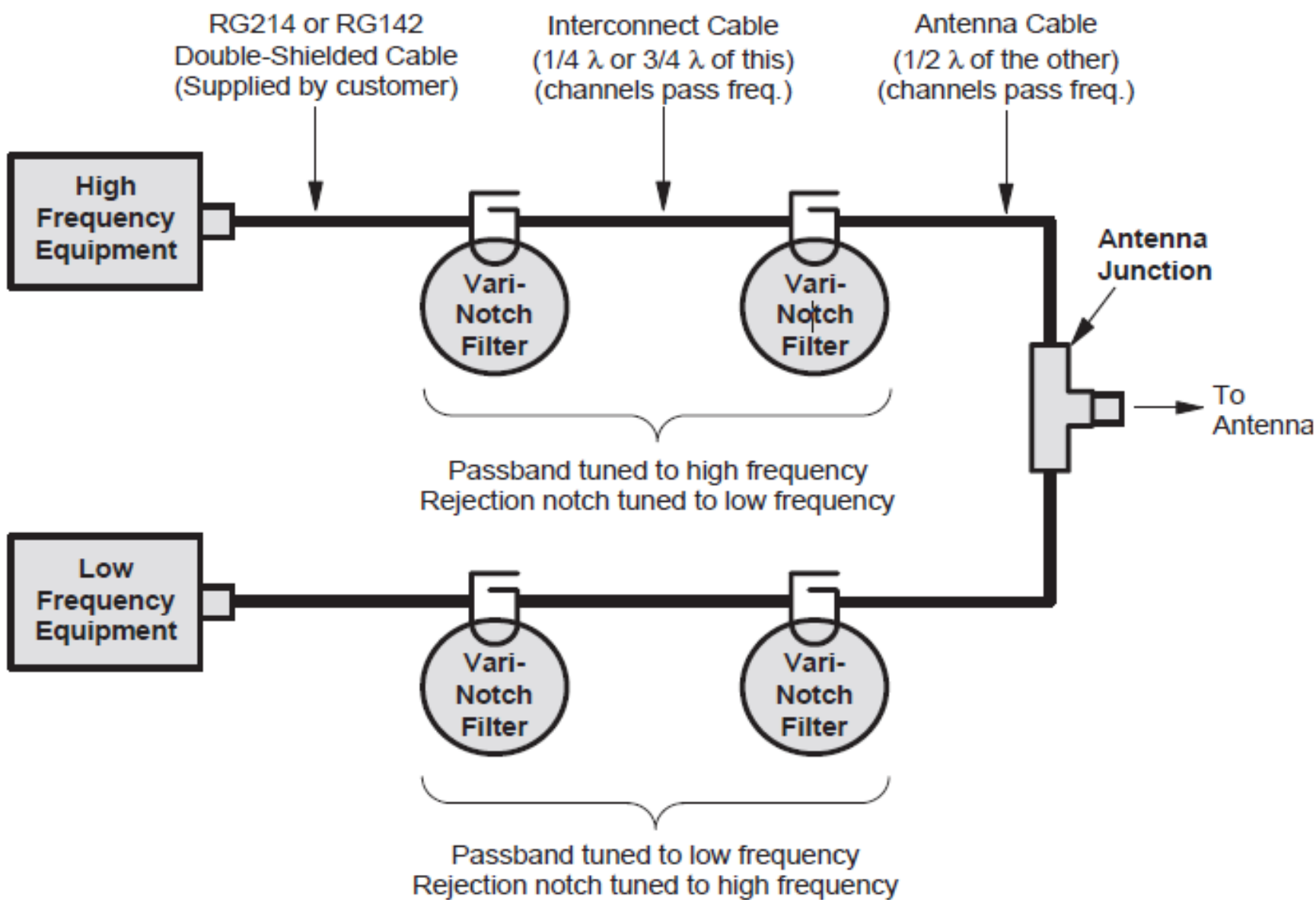


GARS repeater systems

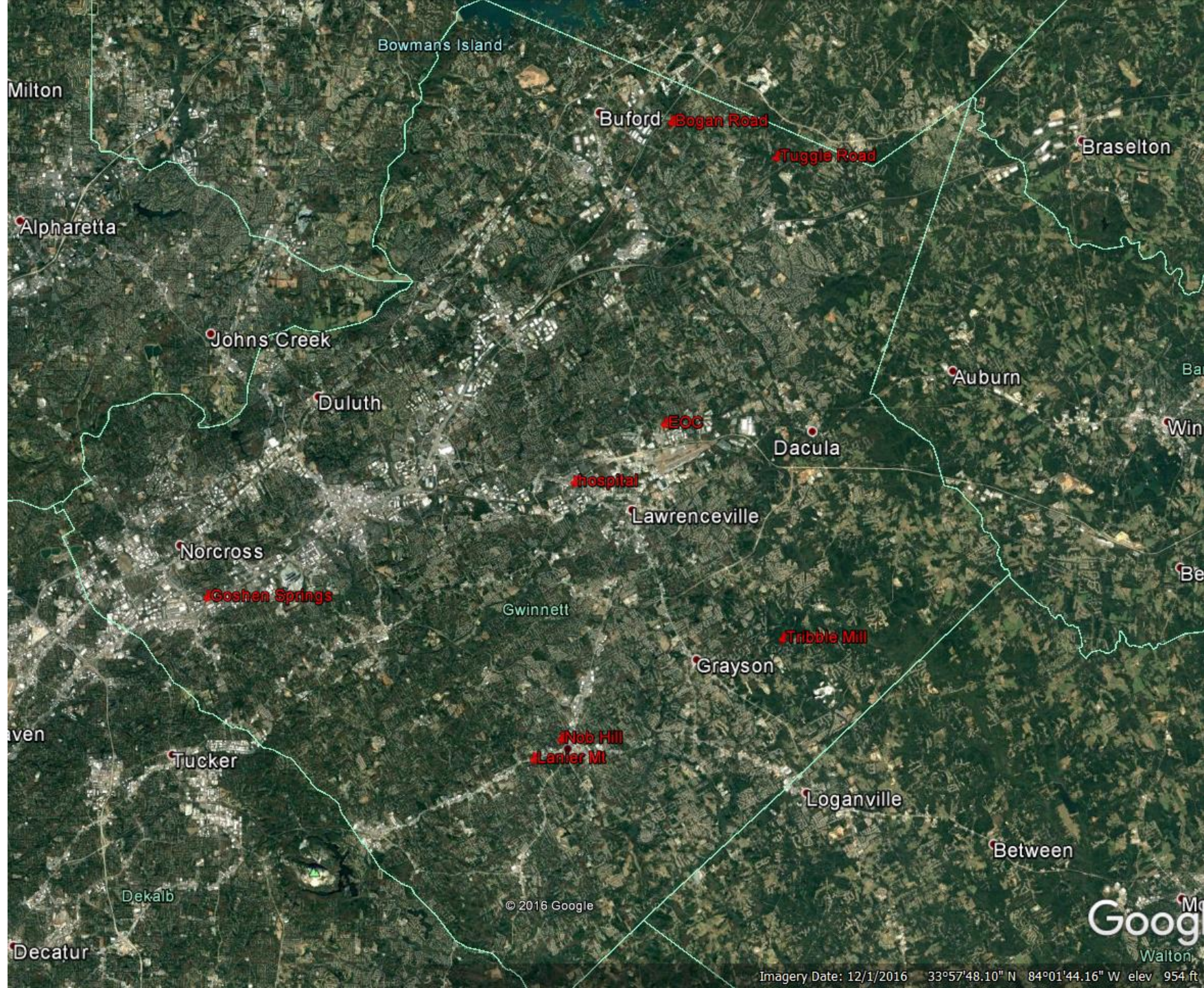
Where are they and how do they work

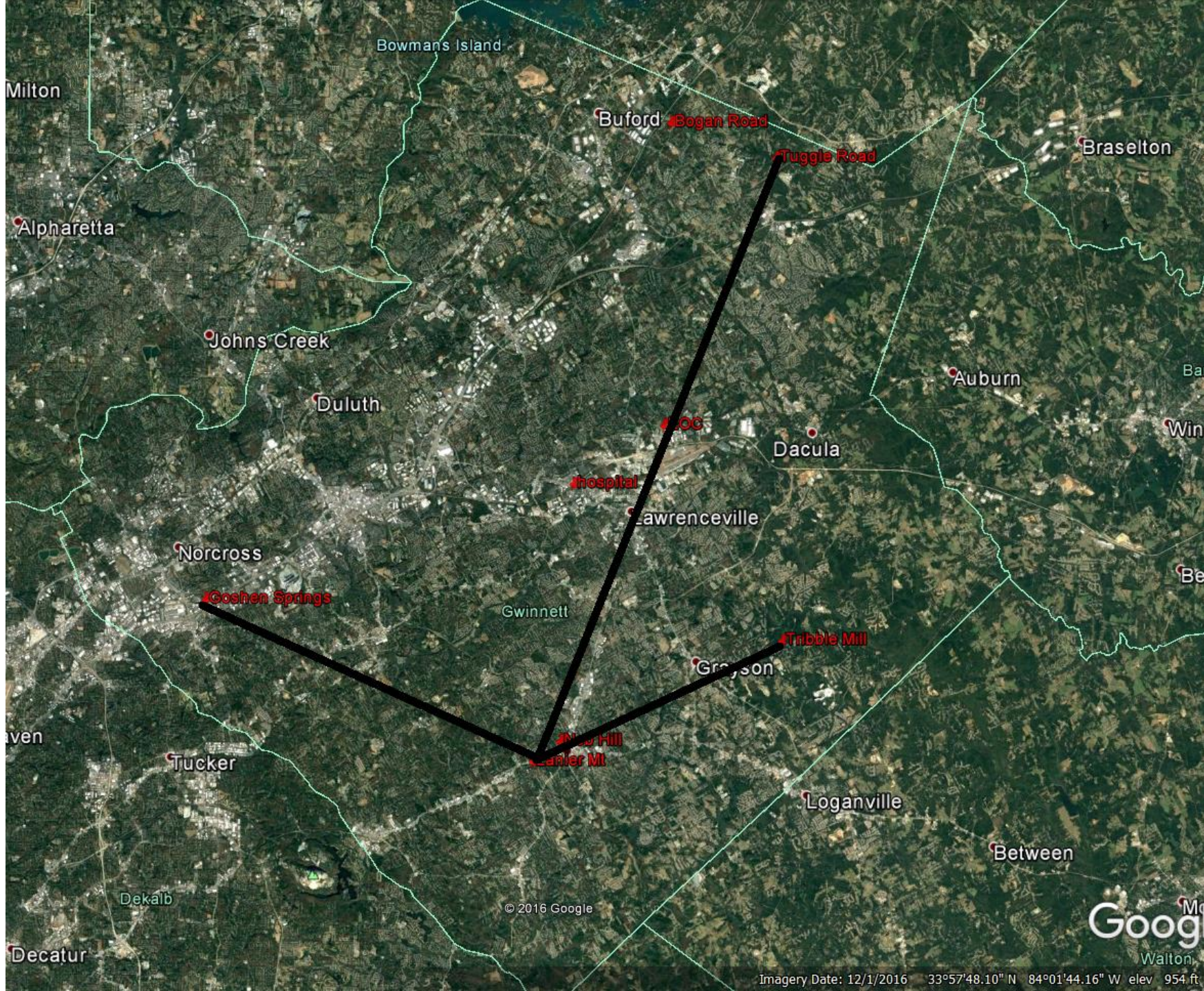






TYPICAL FOUR CAVITY VARI-NOTCH FILTER





© 2016 Google

Imagery Date: 12/1/2016 33°57'48.10" N 84°01'44.16" W elev 954 ft





147.075 repeater + PL82.5

Link Receivers (3)

Goshen Springs Road Norcross

Tuggle Road Hamilton Mill

Tribble Mill Grayson

Lanier Mt. at water tanks.

442.100 Repeater+ PI 100

Yaesu Fusion running in Fix FM mode
20 watts to vertical at 250 feet
Goshen Springs

147.255 Repeater+ PL107.2

Yaesu Fusion running 20 watts.

Located at Snellville Lanier Mountain

Using a dual band vertical right now.

(100 watt henry amp)

444.525 Repeater+ PL 82.5

Yaesu Fusion running in AMS Mode

Henry 100 watt out.

Located on Lanier Mountain

Vertical at 165 feet.(top of tower)

FM or C4FM (fusion)

442.325 Repeater+ PL 100

Yaesu running fix FM Mode
running 20 watt

Dual band antenna at Bogan Road

224.580 Repeater -1.6 PL 100

Kenwood radios for TX/RX

25 watts into 4 bay dipole

Located at Tribble Mill Site

Donated to Club

53.110 + no pl

Located at Bogan Road

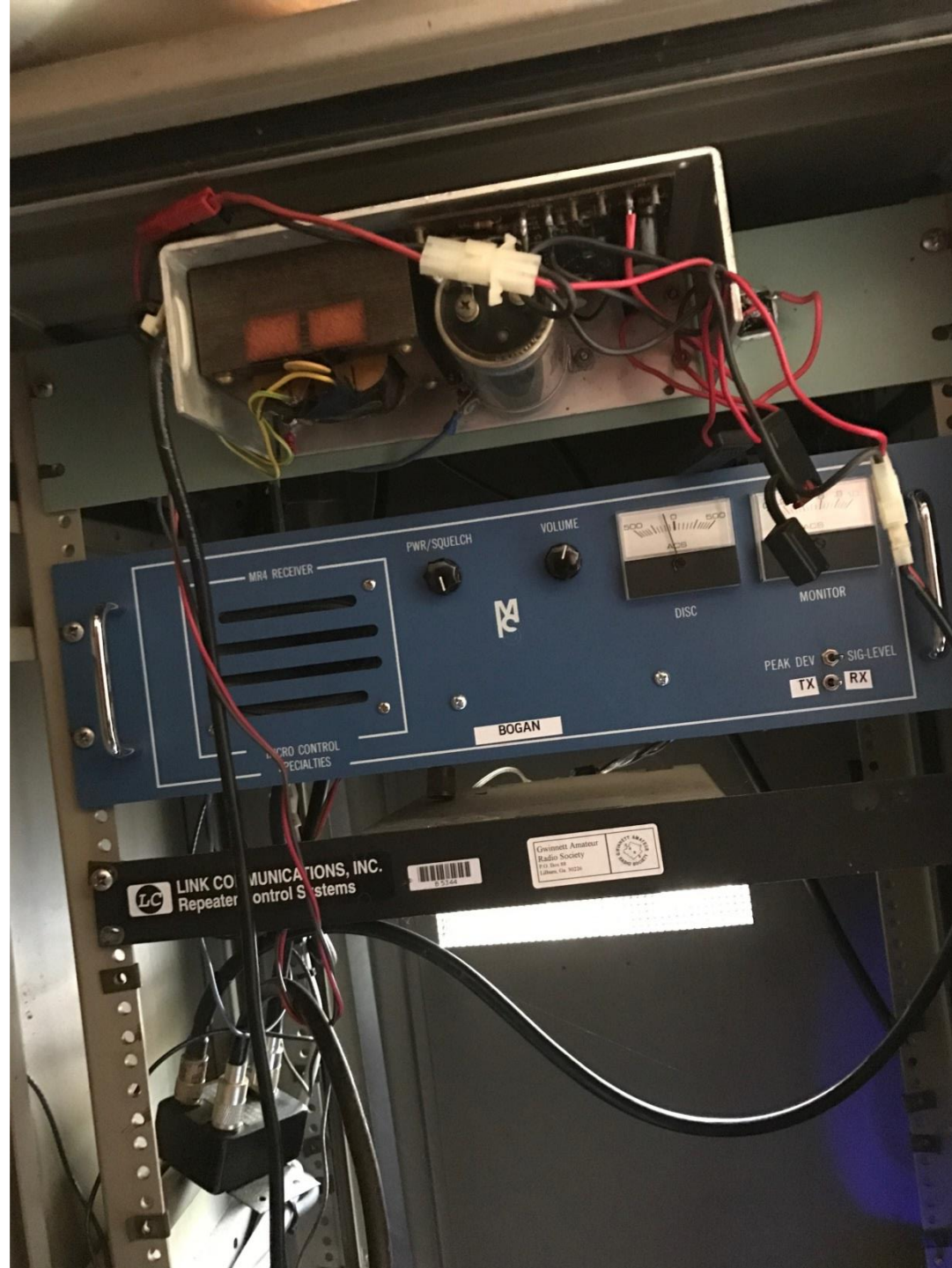
Vertical on water tank

GE Master II running 35 watts

GARS Repeaters

147.075+	pl 82.5	147.255+	pl 107.2
442.100+	pl 100	442.325+	pl 100
444.525+	pl 82.5	224.580-	pl 100
53.110-	no pl		







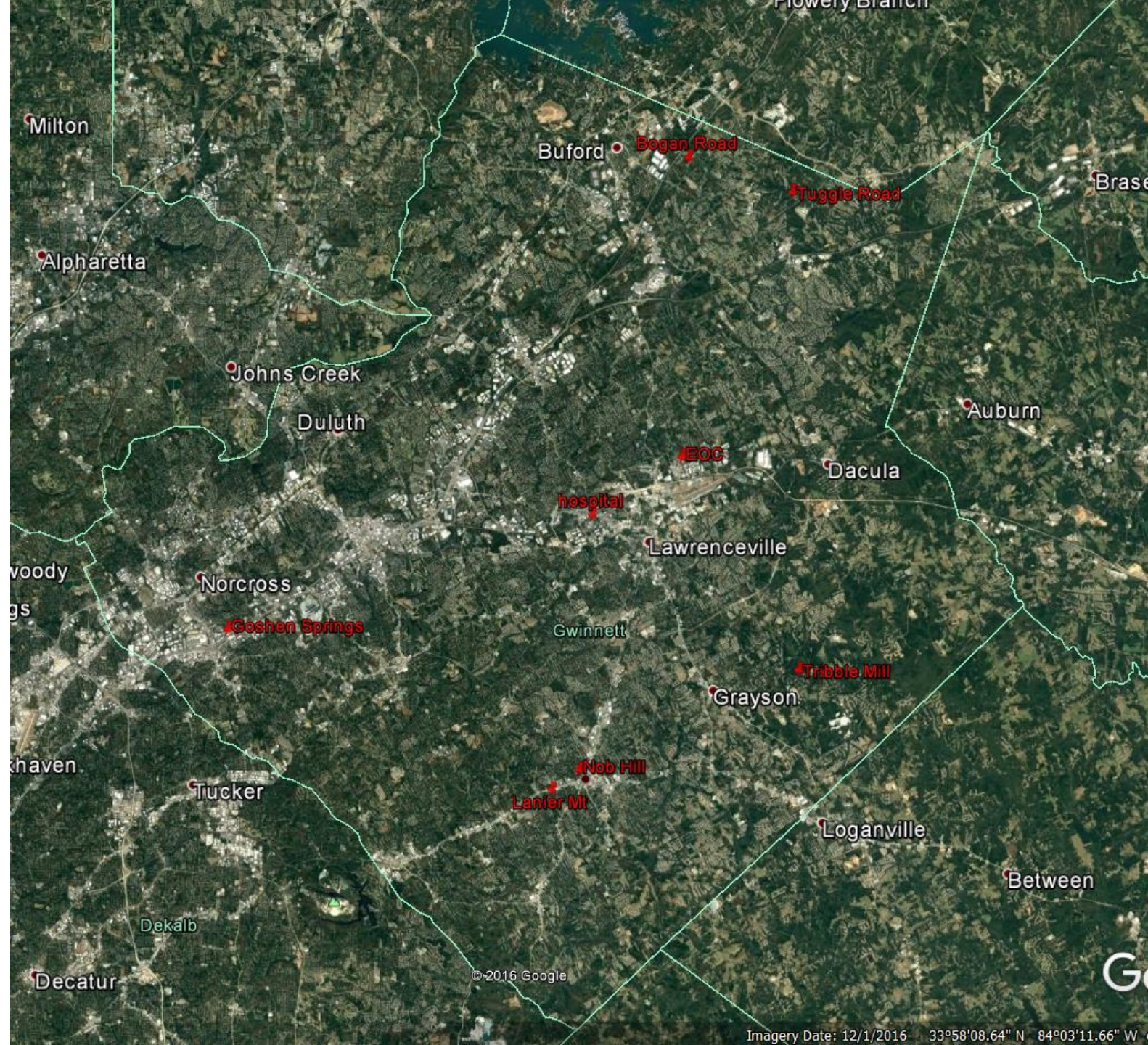








Recap



What have we seen with this layout?

Ht's and little antennas will not make solid contacts consistently.

Medium power may not work in all places.

References

<http://www.repeater-builder.com/rbtip/repeater101.html>

<http://www.repeater-builder.com/antenna/ant-sys-index.html>

<http://www.repeater-builder.com/antenna/tx-rx/tx-rx-instruction-manual-vari-notch-duplexers-with-6-inch-cavities.pdf>